

Site Name **LYTAL-TW**
 Station Names PBF-3, PBF-4, PBF-5
 Aquifers UFA, APPZ, LFA
 FDEP Identifier Unknown
 Date of this summary 8/8/2017

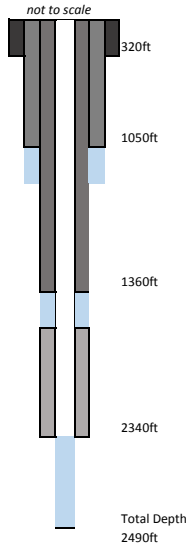
Lat / Long: 264034.82/800612.63
 County: Palm Beach
 Wellhead Repair Date: 2002, 2010

Land Surface elevation
 21.53ft NGVD29

PBF-3 Monitor Zone
 1050-1252ft

PBF-4 Monitor Zone
 1360-1510ft

PBF-5 Monitor Zone
 2340-2490ft

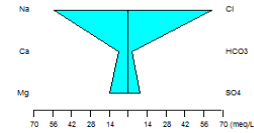


Survey data: 9/19/2017
 Reference elevations: PBF-3 23.86 ft NAVD 88, PBF-4 24.20 ft NAVD 88 and PBF-5 22.11 ft NAVD 88
 Data Adjustments: NGVD 29 adjustment add 1.522
 Access Agreement: Owned by Palm Beach County; effective November 2013 and expires January 2019
 References: Lukasiewicz, et al, 2001. Final Report: Florian Aquifer System Test Well Program at Lake Lytal Park, West Palm Beach, Florida. Technical Publication WS-5, SFWMD, 152p
 SFWMD Survey Septmeber 2017

Upper Monitor Zone PBF-3

Casing Material:	Steel
Diameter:	12-inch
Data Range:	1996-2017
Sampling Events Analyzed:	23
Water Type:	Na-Cl

PBF-3,2/21/2017



Field Parameter Averages PBF-3

Field pH:	7.37
Specific Conductance (uS/cm)	4842
Temperature (Celcius)	23.53
TDS (mg/L)	2668
Water Level (ft NGVD 29)	9.05

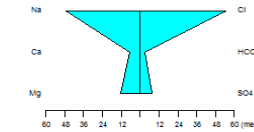
PBF-3 Ionic Ranges

Parameter	Min (mg/L)	Max (mg/L)
Potassium (K)	35	52
Sodium (Na)	940	1410
Calcium (Ca)	58	157
Magnesium (Mg)	131	183
Chloride (Cl)	1810	2500
Bicarbonate (HCO3)	43	220
Sulfate (SO4)	253	470

Middle Monitor Zone PBF-4

Casing Material:	Steel
Diameter:	7-inch
Data Range:	1996-2010
Sampling Events Analyzed:	16
Water Type:	Na-Cl

PBF-4,5/27/2010



Field Parameter Averages PBF-4

Field pH:	7.55
Specific Conductance (uS/cm)	7100
Temperature (Celcius)	22.48
TDS (mg/L)	4099
Water Level (ft NGVD 29)	8.95

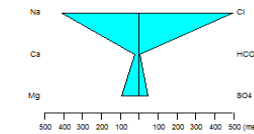
PBF-4 Ionic Ranges

Parameter	Min (mg/L)	Max (mg/L)
Potassium (K)	35	56
Sodium (Na)	1000	1400
Calcium (Ca)	120	150
Magnesium (Mg)	107	170
Chloride (Cl)	1816	2440
Bicarbonate (HCO3)	123	266
Sulfate (SO4)	340	446

Lower Monitor Zone PBF-5

Casing Material:	Steel
Diameter:	2-inch
Data Range:	1996-2010
Sampling Events Analyzed:	17
Water Type:	Na-Cl

PBF-5,5/27/2010



Field Parameter Averages PBF-5

Field pH:	7.25
Specific Conductance (uS/cm)	47904
Temperature (Celcius)	22.95
TDS (mg/L)	31735
Water Level (ft NGVD 29)	7.13

PBF-5 Ionic Ranges

Parameter	Min (mg/L)	Max (mg/L)
Potassium (K)	305	430
Sodium (Na)	9040	10560
Calcium (Ca)	400	560
Magnesium (Mg)	970	1236
Chloride (Cl)	15600	19000
Bicarbonate (HCO3)	146	171
Sulfate (SO4)	1900	2680