

Schlumberger

ELAN* Integrated Geophysical Log Analysis Optimized Mineral + Pore Volume Model

COMPANY: ROWE DRILLING

WELL: OSF 104 (S-65A)

FIELD: OSCEOLA COUNTY

State: FLORIDA

COUNTRY: U.S.

*Elemental Log ANalysis, Mark of Schlumberger

Date Processed: Sept-2007 Date Logged: 4-Oct-2005

Job Number: Processed at: SWS Sacramento

Well Location:

Latitude: Longitude:

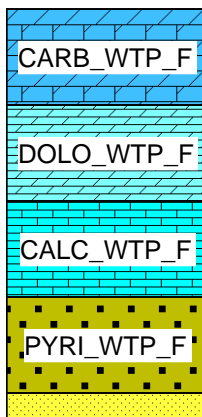
Elevations: KB: DF: GL:

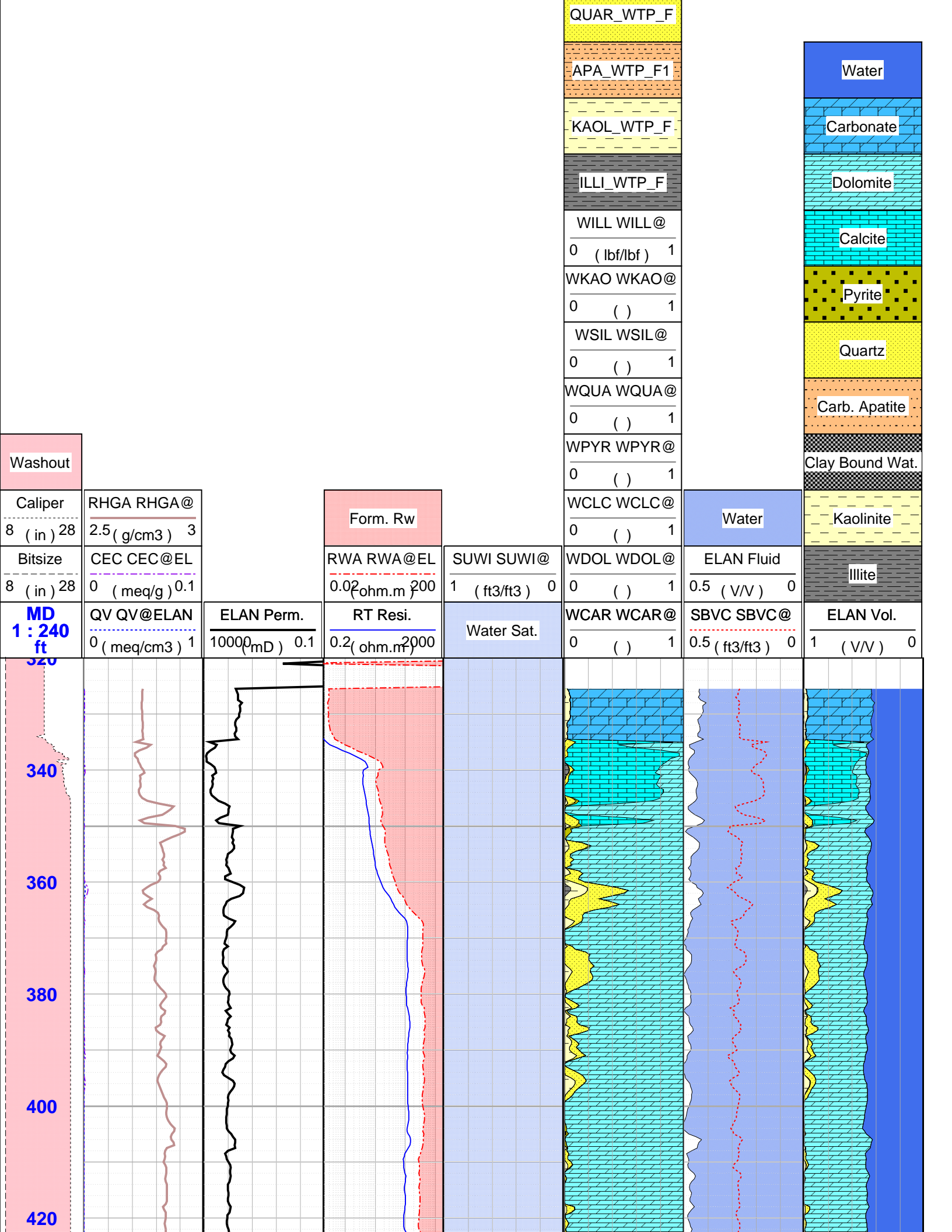
Depth reference is ground surface.

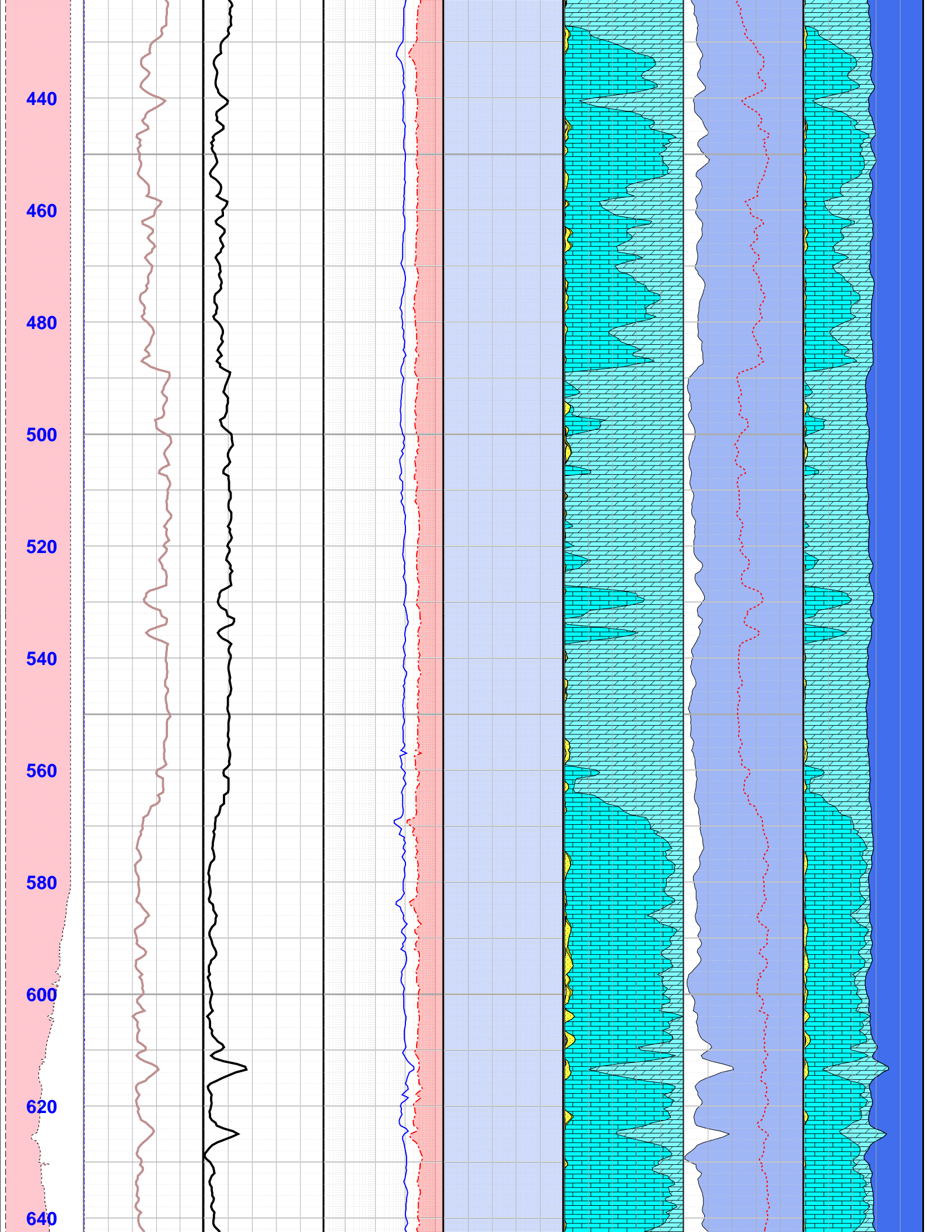
FOLD HERE The well name, location and borehole reference data were furnished by the customer.

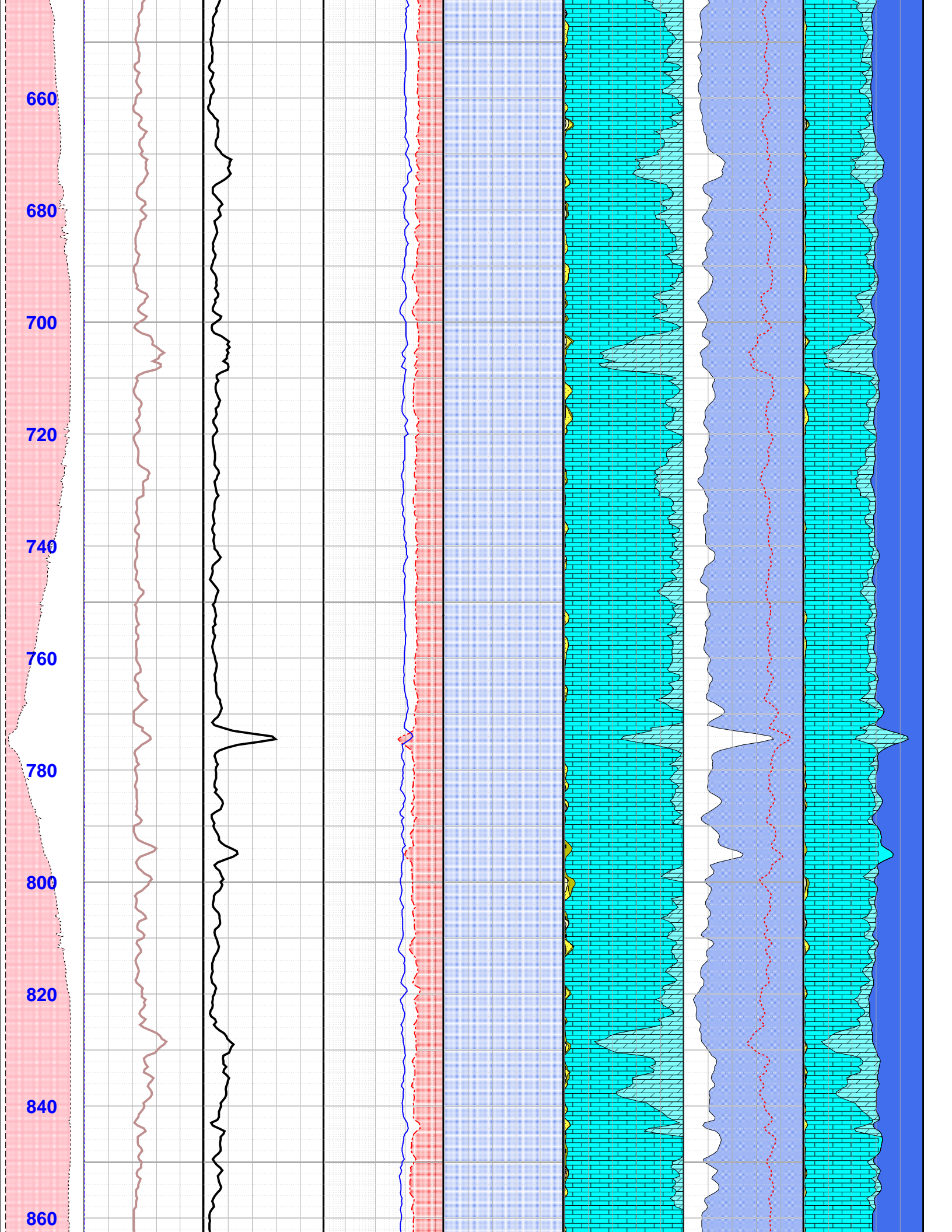
All interpretations are opinions based on inferences from electrical or other measurements and we cannot, and do not guarantee the accuracy or correctness of any interpretation, and we shall not, except in the case of gross or willful negligence on our part, be liable or responsible for any loss, costs, damages or expenses incurred or sustained by anyone resulting from any interpretations made by any of our officers, agents or employees. These interpretations are also subject to Clause 4 of our General Terms and Conditions as set out in our current Price Schedule.

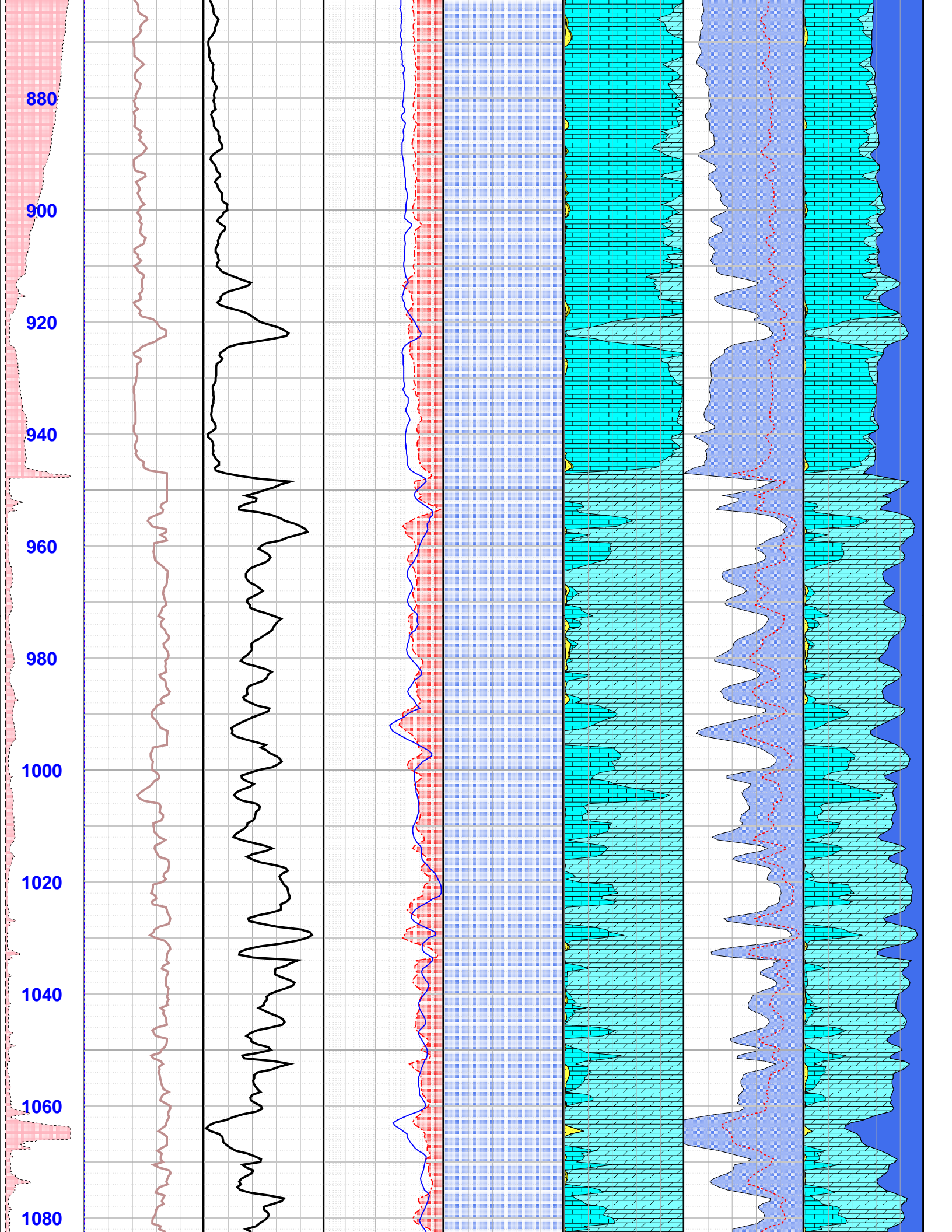
OSF-104 [Fun_1]

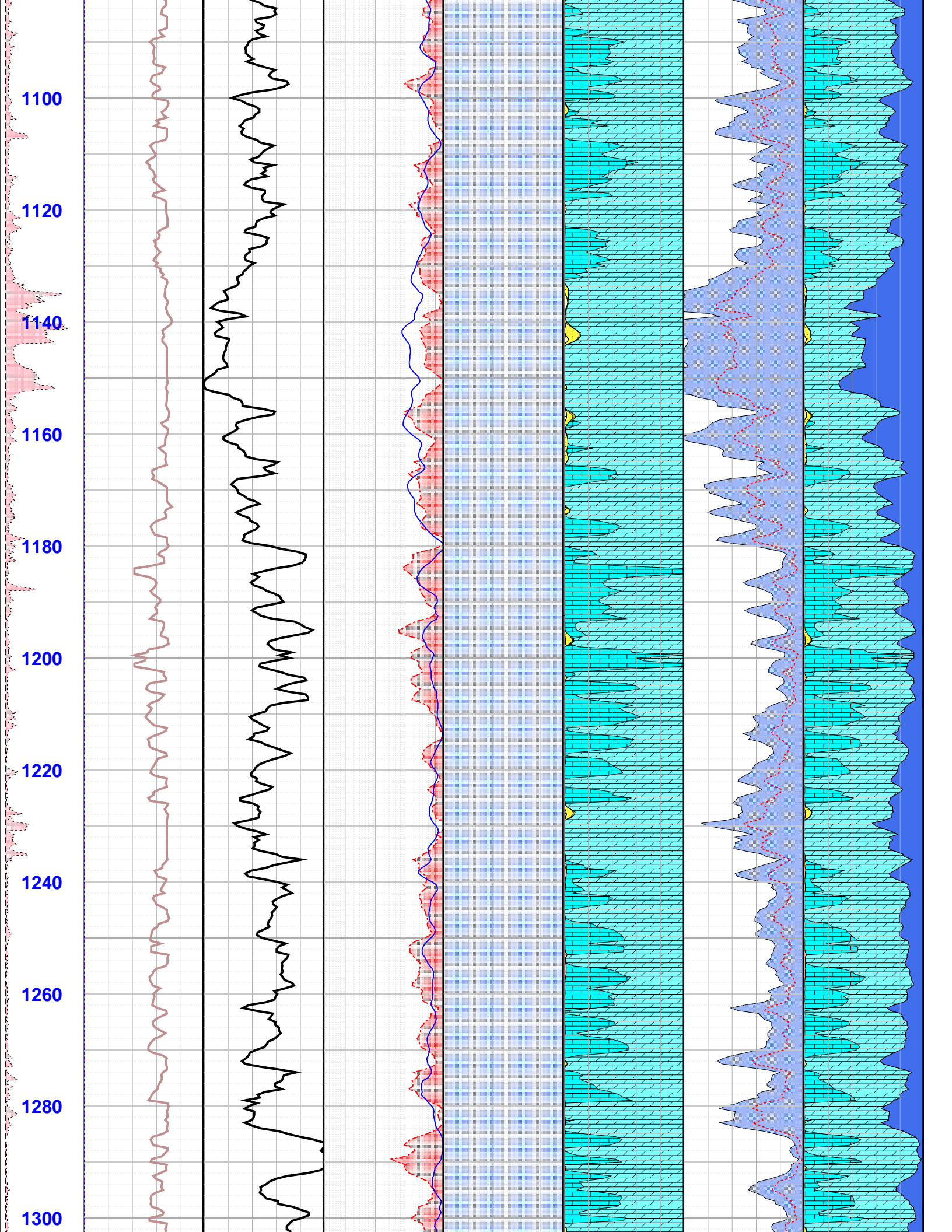


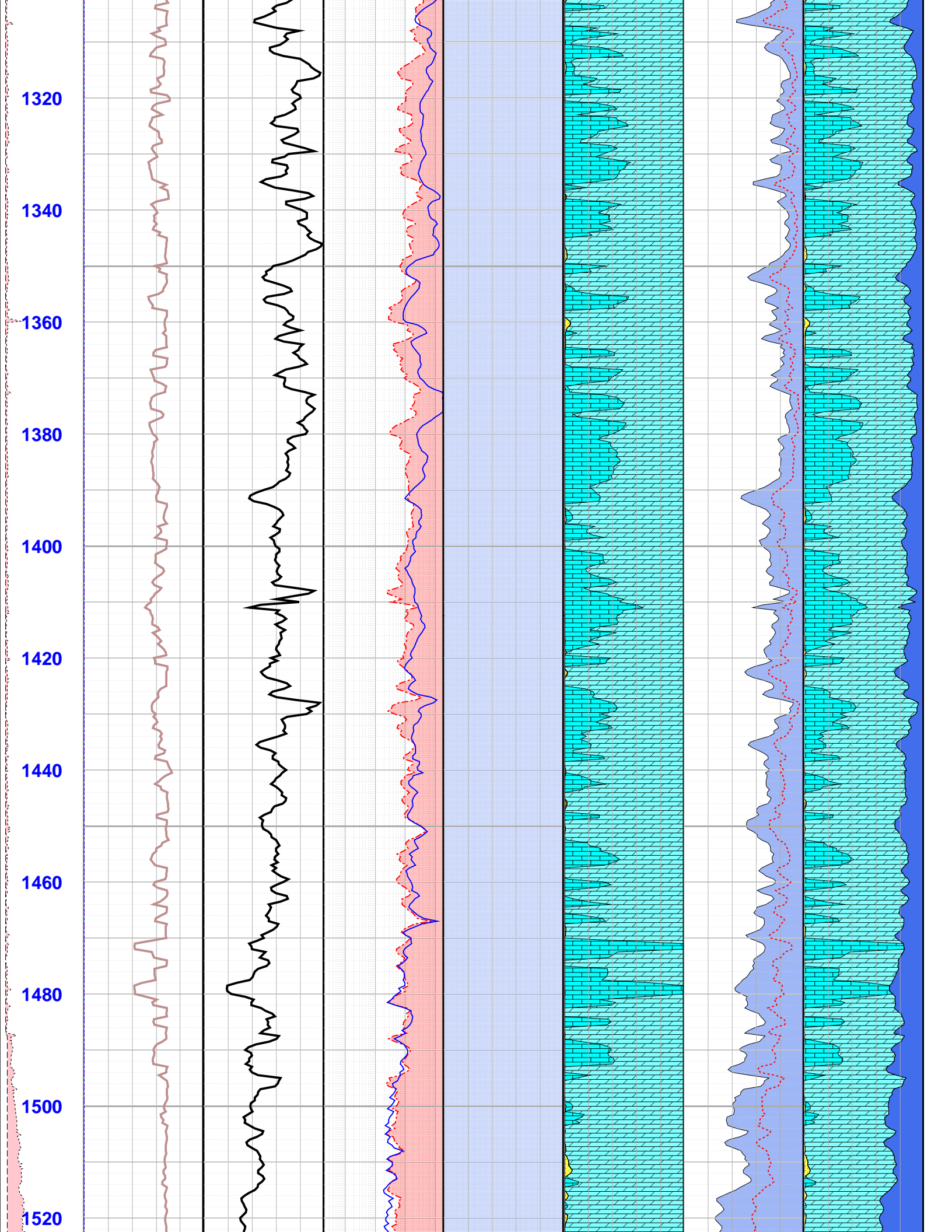


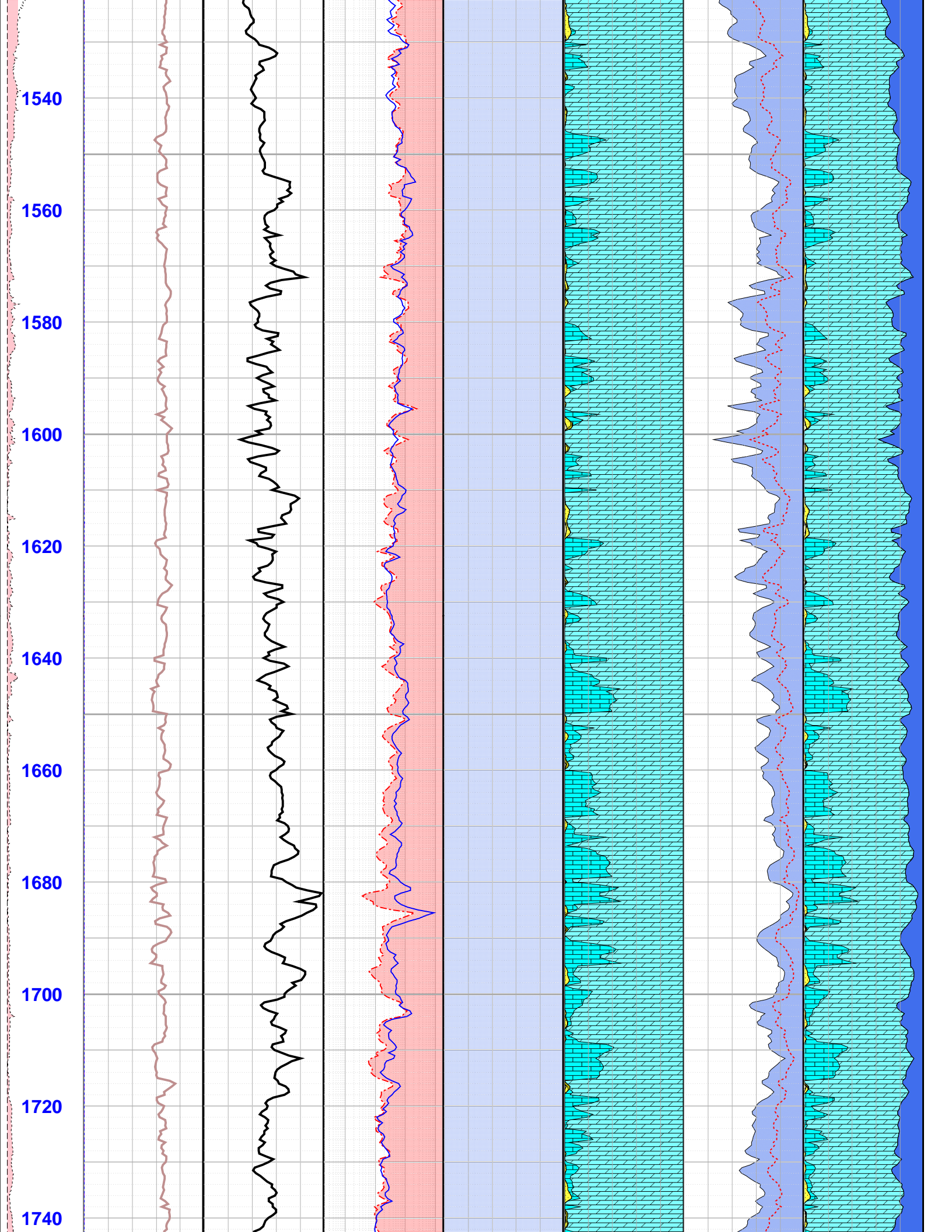


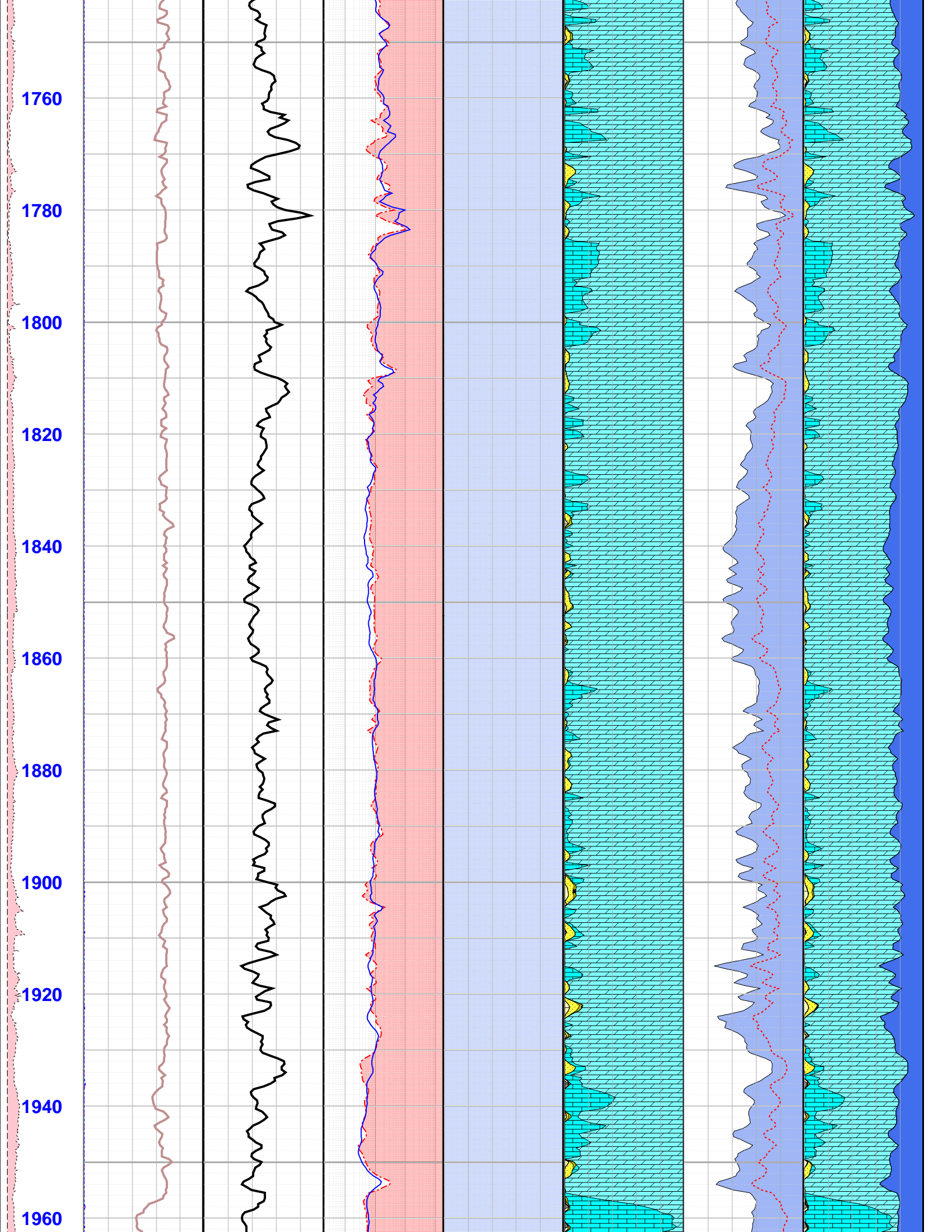


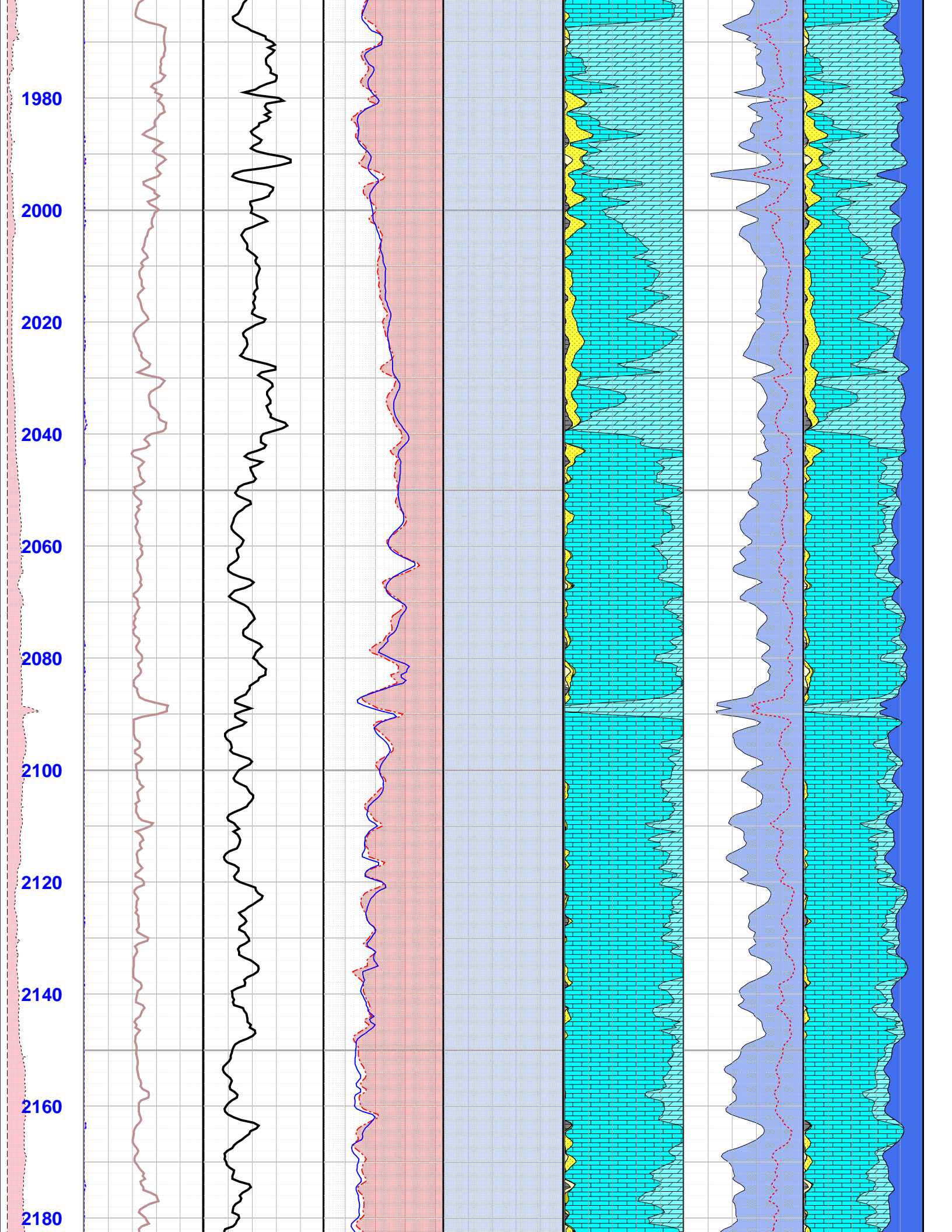


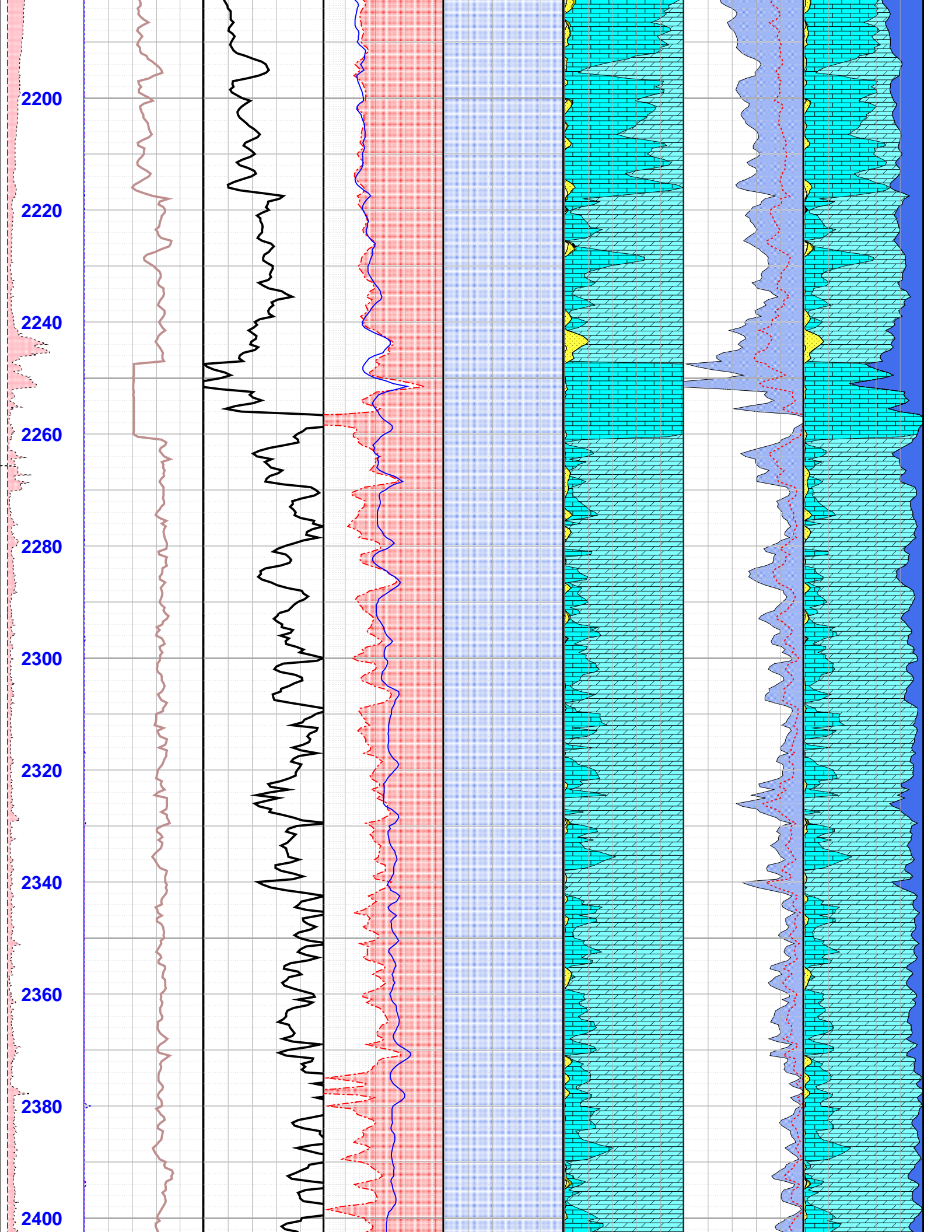


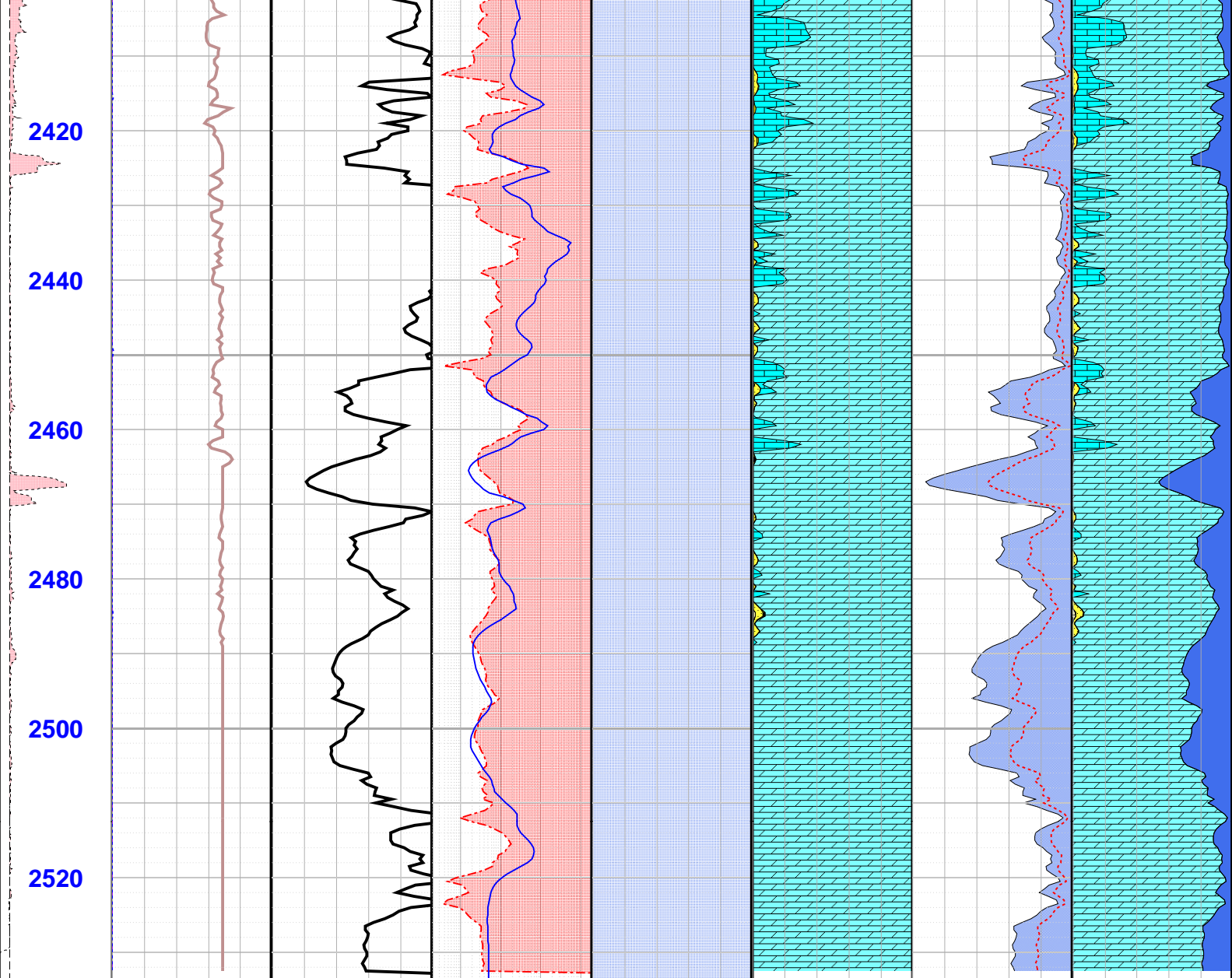












MD 1 : 240 ft	QV QV@ELAN 0 (meq/cm3) 1	ELAN Perm. 10000 (mD) 0.1	RT Resi. 0.2 (ohm.m) 2000	Water Sat.	WCAR WCAR@ 0 () 1	SBVC SBVC@ 0.5 (ft3/ft3) 0	Water
Bitsize 8 (in) 28	CEC CEC@EL 0 (meq/g) 0.1		RWA RWA@EL 0.02 (ohm.m) 200	SUWI SUWI@ 1 (ft3/ft3) 0	WDOL WDOL@ 0 () 1	Water	Carbonate
Caliper 8 (in) 28	RHGA RHGA@ 2.5 (g/cm3) 3		Form. Rw		WCLC WCLC@ 0 () 1	ELAN Fluid 0.5 (v/v) 0	Dolomite
Washout					WPYR WPYR@ 0 () 1		Calcite
					WQUA WQUA@ 0 () 1		Pyrite
					WSIL WSIL@ 0 () 1		Quartz
					WKAO WKAO@ 0 () 1		Carb. Apatite
					WILL WILL@ 0 (lbf/lbf) 1		Clay Bound Wat.
					ILLI_WTP_F		Kaolinite

KAOL_WTP_F

APA_WTP_F1

QUAR_WTP_F

PYRI_WTP_F

CALC_WTP_F

DOLO_WTP_F

CARB_WTP_F

Illite

ELAN Vol.

1 (V/V) 0

OSF-104 [Fun_1]